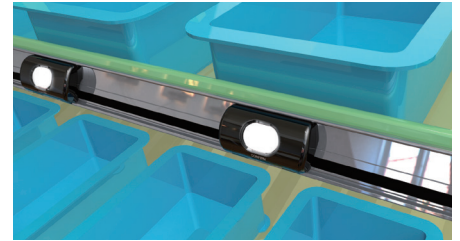
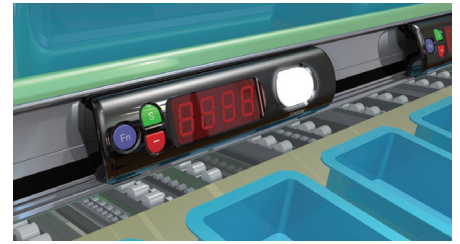


MWU

Light module with push-tabs to help easy mounting and demounting

The new light module (MWU) is provided with push-tabs for easy mounting or demounting, convenient for reposition or relocation of Light Modules selectable from among 3 types of bases for attaching according to type of structure: Aluminum duct base, Pipe frame attaching base, and Flat shelf attaching base



Common Specifications

■Display Case color-Black/■LED lamp color-Full color [Red Green Blue Light blue White Purple Yellow] /

■Numerical designation LED color - Red(Character height 10.0mm)/■Dimensions(Body dimensions excluding projections ductbased)

MWU2000LF Size (mm) : 76×37×20.5

MWU2040PF Size (mm) : 155×37×20.5

MWU2040PRG-22 Size (mm) : 198×37×20.5

MWU2414 Size (mm) : 225×37×20.5

Contiguration



The RoHS directive is the directive which bans certain hazardous substances from electrical and electronic deiveces such as computers,communication devices and home electronics used in the European Union.This is intended to minimize risks of hazarding human health and burdens on the environmetin the product life cycle from production to disposal.

AIOI-SYSTEMS CO.,LTD.

WiRA Omori Bldg.9F,1-6-8 Omori Kita, Ota-ku, Tokyo, 143-0016, JAPAN

TEL : 03(3764)0228 FAX : 03(3764)7520

E-MAIL : info@hello-aioi.com URL : <https://www.hello-aioi.com/en>

[Osaka Branch] nissay_kyoubashi Bldg.301,4-6-22, Higashi Noda-cho, Miyakojima-ku, Osaka, 534-0024, JAPAN TEL:06 (6242) 8062 FAX:06 (6242) 6570

[Nagoya Branch] ID•AREA 205, 1-2-4, Kanayama, Naka-ku, Nagoya-shi, Aichi, 460-0022, JAPAN TEL :052 (339)1766 FAX:052(339)1767